



## TYPE 2A

Ground / First / Second Floor

Ground Floor



First Floor



Second Floor



- |                             |                                  |
|-----------------------------|----------------------------------|
| 1 Garden - 17'-3" x 6'-3"   | 9 Kitchen - 8' x 11'-9"          |
| 2 Parking - 10'-9" x 15'-6" | 10 Bedroom - 12'-3" x 11'-9"     |
| 3 Entrance - 3'-6" x 8'     | 11 Bath & Dress - 5' x 11'-9"    |
| 4 Living - 17'-6" x 12'-9"  | 12 Utility - 10'-6" x 6'-3"      |
| 5 Court - 10'-9" x 10'-3"   | 13 Store - 4'-6" x 3'            |
| 6 Dining - 15' x 10'-3"     | 14 Garden - 16' x 6'-3"          |
| 7 Puja - 3'-6" x 2'-6"      | 15 Servant's Toilet - 4'-6" x 3' |
| 8 Storage - 3'-9" x 3'-6"   |                                  |

- |                                 |                              |
|---------------------------------|------------------------------|
| 1 Master Bedroom - 15' x 12'-9" | 5 Terrace - 8'-3" x 11'-9"   |
| 2 Bath & Dress - 5'-9" x 12'-9" | 6 Bedroom - 12'-3" x 11'-9"  |
| 3 Terrace - 10'-3" x 8'         | 7 Bath & Dress - 5' x 11'-9" |
| 4 Family - 10'-3" x 8'-6"       |                              |

- |                              |
|------------------------------|
| 1 Terrace - 20'-6" x 12'     |
| 2 Verandah - 12'-0" x 11'-0" |
| 3 Bedroom - 12'-3" x 11'-9"  |
| 4 Bath & Dress - 5' x 11'-9" |



## TYPE 2B

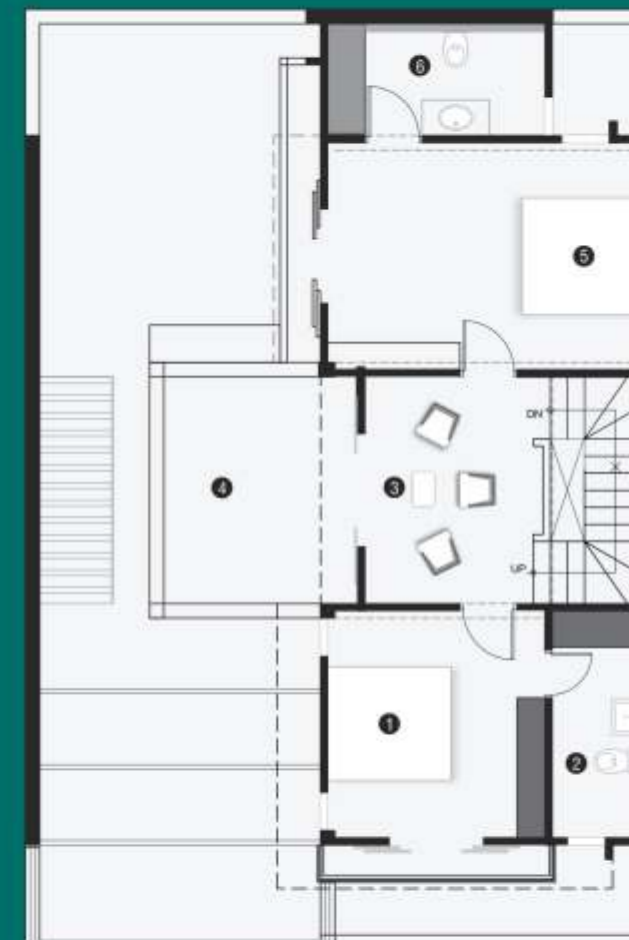
Ground / First / Second Floor

Ground Floor



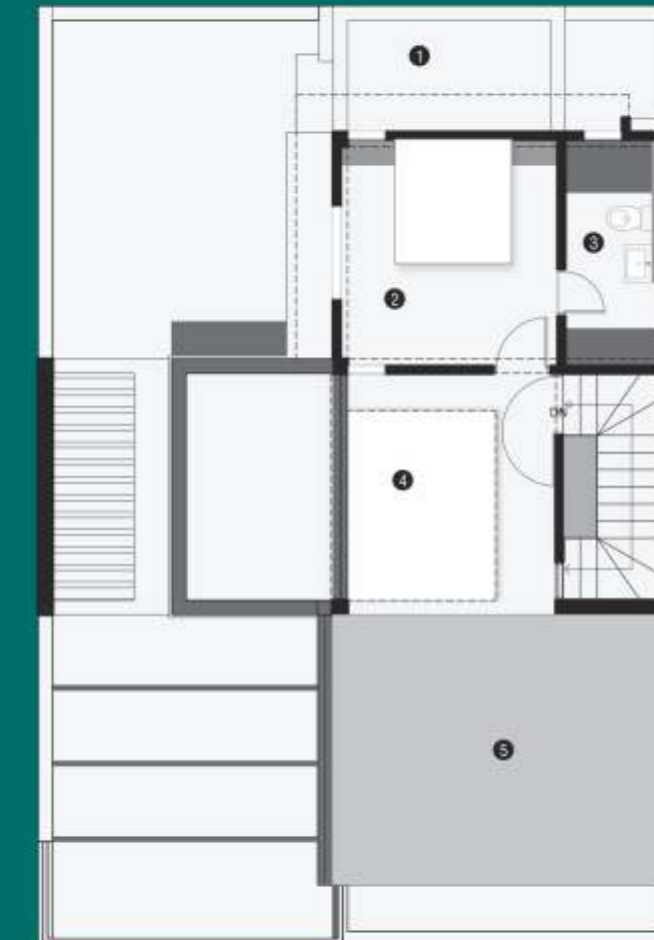
- 1 Garden - 5'-6" x 17'-3"
- 2 Carport - 10'-9" x 15'-6"
- 3 Bedroom - 11'-6" x 12'
- 4 Bath & Dress - 5' x 12'
- 5 Entrance - 6'-3" x 12'
- 6 Living - 19'-6" x 12'
- 7 Puja
- 8 Store - 5'-6" x 3'
- 9 Dining - Kitchen - 16'-9" x 12'
- 10 Garden - 14' x 17'-9"
- 11 Servant's Toilet - 4' x 3'
- 12 Utility - 7'-6" x 6'
- 13 Utility O. T. S. - 5' x 6'
- 14 Wash - 2'-6" x 4'-6"

First Floor



- 1 Bedroom - 11'6" X 12'
- 2 Bath & Dress - 5' X12'
- 3 Family 9' X 12'
- 4 Terrace - 10'-6" X 12'
- 5 Master Bedroom - 16'-9" X 12'
- 6 Bath & Dress - 11'6" X 6'

Second Floor (Sloping Roof)



- 1 Lower Terrace
- 2 Bedroom 4 - 11'6" X 12'
- 3 Bath & Dress - 5' x12'
- 4 Barsati - 11' X 12'
- 5 Roof